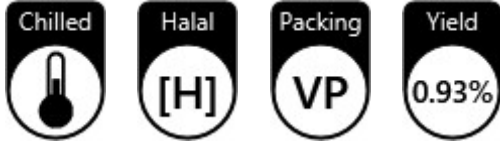




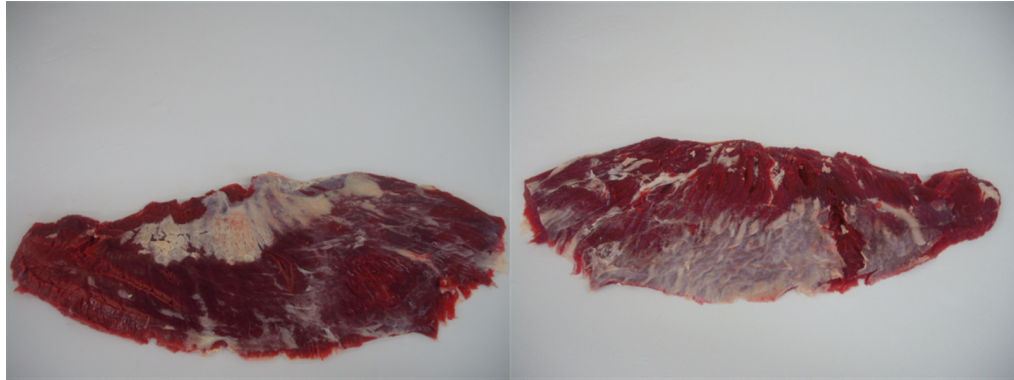
# 28198 - PS-GRASS FED FLAP MEAT 2VP CH (WITH PAD)



Edible

Scheduling Group	SG1	DEFINITION - Halal, Grass Fed, EU eligible. Can include Tb Alert EXCLUDES - Downer Cattle, HGP Positive, Tb Suspect at Inspection, Tb Reactor
Market Group	N/A	
Halal Status	Halal Only	
Specification	B46 FLAP MEAT	
Attribute	Grass Fed	
pH	< 5.80	
Spinal Cord	Removed	
Bone	Boneless	

### Images



### Quality Points

- QP 1 Natural shape of muscle followed
- QP 2 Trimmed to blue membrane

### Weights

		Metric		Imperial	
		Min	Max	Min	Max
N/A	Pieces Per Pack		2		
	Catch Weight (Kg)	0.5kg	28kg	1.1lb	61.73lb
	Packs Per Carton		6		

Description	Nav Code	Design No	Packs	Mult	Qty	Total Tare		Total
						Tare		



# 28198 - PS-GRASS FED FLAP MEAT 2VP CH (WITH PAD)

### Labels

Expiry Calculated By

Slaughter Date



Carton

Format None

SILVER FERN FARMS LIMITED, DUNEDIN, NEW ZEALAND [www.silverfernfarms.com](http://www.silverfernfarms.com)

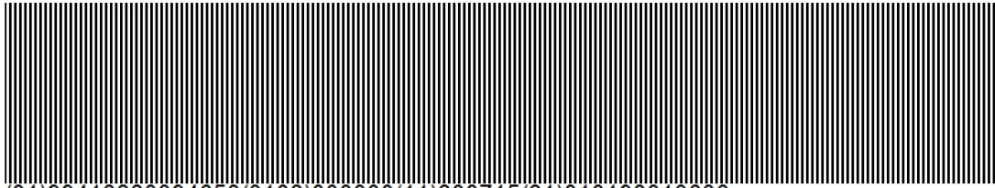
BONELESS BEEF PS-GRASS FED  
FLAP MEAT  
PRODUCT OF NEW ZEALAND

[H]



KEEP REFRIGERATED

NO ADDED GROWTH HORMONES



(01)99418220394658(3102)000000(11)200715(21)010198013636

Prepared by: ME###  
Silver Fern Farms Limited  
- Dunedin, 283 Princes  
Street, Dunedin

PRODUCTION/SLAUGHTER DATE: 15 JUL 2020

PACK DATE: 16 JUL 2020



NET WEIGHT  
0.0lb  
0.00kg

# C28198

0000HR  
SUPER  
ORDER