

# 80/20 ANGUS GROUND BEEF PATTY

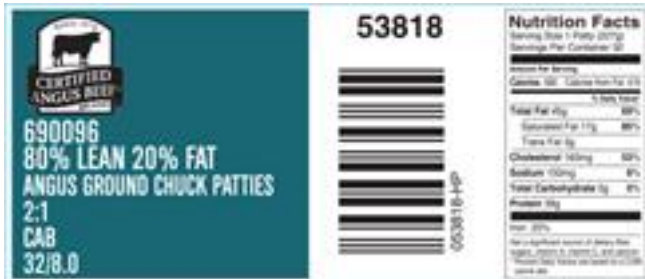


Image of product is not meant to represent the actual product trim specification

National Beef's FINE GROUND CHUCK PATTY uses trimmings that are from the Chuck, including Chuck Cap, Clods, Pectoral, Chuck Trim, and Chuck Roll. Shank will be added. The raw material is ground and blended to the appropriate fat content, then run through a finished grinder with a metal detection step.

<b>Product Code:</b>	53818	<b>Case Dimensions:</b>	20.9375" x 11.8125" x 4.6250"
<b>Description:</b>	80/20 ANGUS GROUND BEEF PATTY	<b>Cube:</b>	0.66
<b>Program:</b>	Grinds	<b>Pallet Tie x High:</b>	12 x 7
<b>GTIN:</b>	90710178538184	<b>Avg Case Weight:</b>	16.0
<b>Format:</b>	Patty, Round/Wide	<b>Pieces/Box:</b>	32
<b>Size:</b>	8 Oz Patty		

### Box End Label



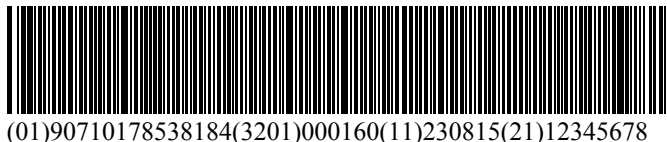
### Brand Logo



### Bag Impression



### GS-128 Weight Label (sample)



NOTICE: The above statements, recommendations, suggestions and data we believe to be reliable. Nevertheless, all such statements, recommendations, suggestions and data herein above presented are made without guarantee, warranty, or responsibility of any kind on our part. The above information is subject to change without notice.