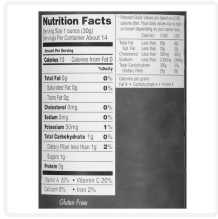




Dunbar Diced Red Peppers, 15 Ounces, 24 Per Case

DOT 348393 GTIN 10023709110167 MFR 01014300240001



Product Details

Temperature	Dry Goods
How Packed	15.00 OZ 24 per case
Shipping Weight / Net Weight	25 lb / 21.75 lb
Cube	0.65 ft ³
Pallet Configuration	15 per layer 5 layers 75 per pallet
Dimensions	12.5 IN L 9.75 IN W 9.25 IN H
Shelf Life / Guarantee	1460 days / 180 days
Dietary Claims & Certifications	Kosher
Country of Origin	United States

Stocked

Product Broker

Broker information is not available. Contact your Dot CSR with any questions.

Features

Dunbars Red Bell Pepper Are Picked At The Peak Of Freshness To Ensure The Sweetest Taste And The Brightest Color. They Are Free From Stems, Seeds And Cores Making Them Perfect For Pimiento Cheese, Pasta Salad, Sandwiches, Pastas, Wraps And More

<p>Preparation</p> <p>Ready_To_Eat - Drain, Rinse, Add To Recipe</p>	<p>Storage</p> <p>Prior To Opening, Store Under Cool Dry Conditions, Avoid Freezing</p>
---	--

Ingredients

Red Sweet Pepper, Water And Citric Acid

<p><input checked="" type="checkbox"/> Contains</p> <p><input type="checkbox"/> May Contain</p> <p><input type="checkbox"/> Free From</p> <p>Peanuts, Tree Nuts, Milk, Mustard, Wheat, Sesame Seeds, Eggs, Fish, SO2 & Sulphites, Crustaceans, Soy</p>	<p>Known Dietary Claims</p> <p>Kosher</p>
---	--



Dunbar Diced Red Peppers, 15 Ounces, 24 Per Case

DOT 348393 GTIN 10023709110167 MFR 01014300240001

GTINs and Packaging

	GTIN	Name	Qty in Parent	Ship Wt	Net Wt	Cube	Dimensions
Case	10023709110167	24/300 Diced Red Peppe...		25.00 LB	21.75 LB	0.652 CF	12.50 IN L x 9.75 IN W x 9.25 IN H
Each	00023709110160	300 Diced Red Pepper	24	1.03 LB	0.90 LB	0.023 CF	3.00 IN L x 3.00 IN W x 4.44 IN H

Serving Size

Nutrition Facts (Ready to Eat)

14 Servings Per Container

Serving Size **30 g**

Amount Per Serving

Calories **5**

	% Daily Value*
Total Fat 0 g	0%
Saturated Fat 0 g	0%
Trans Fat 0 g	
Cholesterol 0 mg	0%
Sodium 0 mg	0%
Total Carbohydrate 2 g	1%
Dietary Fiber 1 g	2%
Sugar 1 g	0%
Added Sugar 0 g	0%
Protein 0 g	0%
Vitamin D 0 µg	0%
Potassium 47 mg	2%
Calcium 2 mg	0%
Iron 0 mg	0%
Vitamin A 0 µg	0%

* The % Daily Value (DV) tells you how much a nutrient in a serving of food contributes to a daily diet. 2,000 calories a day is used for general nutrition advice.

Notes:

- The actual nutritional label(s), allergens, dietary claims, and ingredients may vary slightly
- The values displayed above are provided by the vendor of the item (Moody Dunbar, Inc.) and are not provided by Dot Foods
- Source GTIN: 00023709110160/Consumer or Base