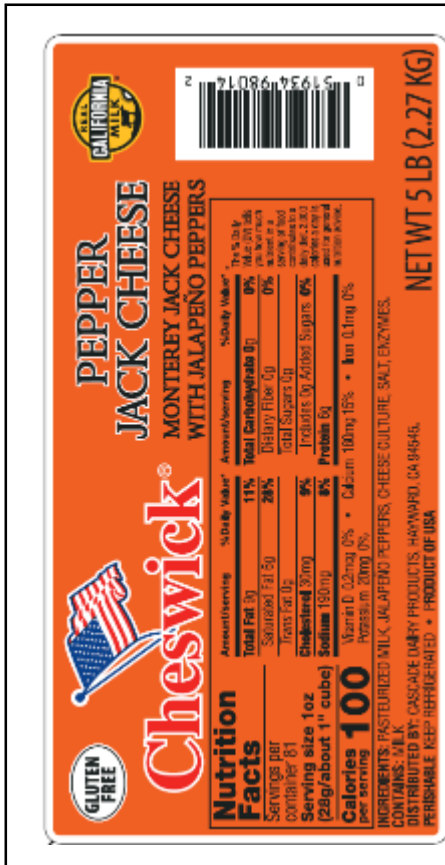




PACIFIC CHEESE CO., INC.  
 21090 CABOT BLVD.  
 HAYWARD, CA 94545  
 PHONE: (510) 784-8800 - FAX: (510) 784-8846

**8/5# PPR JACK CHSWCK DELI CONFIDENTIAL**



PC Code: 00628  
 UPC Code: 051934980142  
 GTIN Code:  
 Regulatory Statement: This product is processed and packed in accordance with the Food and Drug Administration and meets all Food, Drug, and Cosmetic Act Guidelines.  
 Texture: Firm, with some slight mechanical openings.  
 Flavor: Mild and slightly buttery with hot pepper and no off flavors.  
 Dimensions LxWxH: 11.00 X 3.50 X 3.25  
 Net Weight: 5 LBS  
 Weight Range: 5-5.15 lbs  
 Shelf Life: 180 days maintain product at 33-40F  
 Melt: A Complete Melt  
 Color: NCI 1-4 w/ red & green peppers

Nutrition Facts		
Servings per container		
<b>Serving Size</b>	<b>28 g</b>	
Amount per Serving		
<b>Calories</b>	<b>100</b>	
		<b>% Daily Value*</b>
<b>Total Fat</b>	9 g	11 %
Saturated Fat	6 g	28 %
Trans Fat	0 g	
<b>Cholesterol</b>	30 mg	9 %
<b>Sodium</b>	190 mg	8 %
<b>Total Carbohydrate</b>	0 g	0 %
Dietary Fiber	0 g	0 %
Sugars	0 g	
Added Sugars	0 g	0 %
<b>Protein</b>	6 g	
Vitamin D	0.2 mcg	0 %
Calcium	180 mg	15 %
Iron	0.1 mg	0 %
Potassium	20 mg	0 %

100g Nutrition Facts		
Servings per container		
<b>Serving Size</b>	<b>100 g</b>	
Amount per Serving		
<b>Calories</b>	<b>375</b>	
		<b>% Daily Value*</b>
<b>Total Fat</b>	31 g	40 %
Saturated Fat	20 g	101 %
Trans Fat	1 g	
<b>Cholesterol</b>	99 mg	33 %
<b>Sodium</b>	663 mg	29 %
<b>Total Carbohydrate</b>	2 g	0 %
Dietary Fiber	0 g	0 %
Sugars	0 g	
Added Sugars	0 g	0 %
<b>Protein</b>	22 g	
Vitamin D	0.6 mcg	3 %
Calcium	645 mg	50 %
Iron	0.4 mg	2 %
Potassium	83 mg	2 %

**CODE DATE FORMATS**

Seam Code:  
 Product Code: Sell By (MM/DD/YY)  
 Case Label: 00628 8/5# PPR JACK CHSWCK DELI CHEESE  
 Case Code: SELL BY (MM/DD/YY)(TIME)(COUNT)(LOT #)(PLT #)

**CASE INFORMATION**

Dimensions: 15 5/16 x 11 11/16 x 7 7/16 Pack: 8 / 5.00  
 Gross Weight: 41.5 Cases/Layer: 9  
 Net Weight: 40.00 Layers/Pallet: 6  
 Cube: 0.8000 Cases/Pallet: 54

**CHEMICAL STANDARDS**

Moisture 39.0 - 44.0%  
 Fat (FDB) 50.0 - 55.0%  
 Salt 1.4 - 2.0%  
 pH 5.0 - 5.4

**MICROBIOLOGICAL STANDARDS**

Mold < 1000 cfu/g  
 Yeast < 1000 cfu/g  
 Coliform < 100 cfu/g  
 Salmonella sp negative cfu/375g  
 Listeria sp negative cfu/25g  
 Staph. Coag+ negative cfu/g

*This product is classified as a Dairy Allergen.*

**Ingredient Statement**

Pasteurized Milk, Jalapeno Peppers, Cheese Cultures, Salt and Microbial Enzymes.

Approved By:  
 Corporate QA

Signature:

Date: