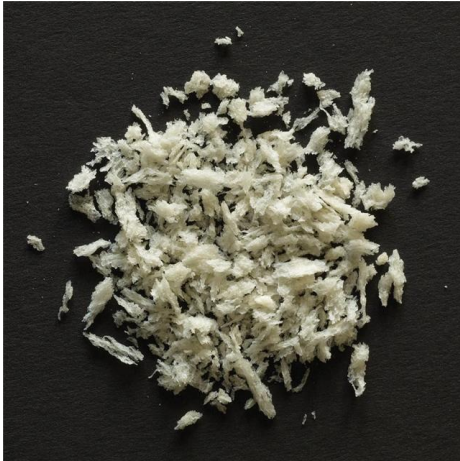




Upper Crust Enterprises

# 1830 - Panko Lg Japanese Bread Crumb

Authentic Panko - Light Crispy texture never hard or dense - Flaky & delicate Panko - Non-GMO, Vegan, Kosher & Halal - 26 % higher yield vs leading competitor. For product information and samples visit [www.uppercrustent.com](http://www.uppercrustent.com) or call 213-625-0038



## Nutrition Facts

Servings per Container **320**  
Serving size **3/4cup-1oz (28g)**

Amount per serving  
**Calories 110**

	% Daily Value*
<b>Total Fat</b> 0.5g	<b>1%</b>
Saturated Fat 0g	<b>0%</b>
Trans Fat 0g	
<b>Cholesterol</b> 0mg	<b>0%</b>
<b>Sodium</b> 100mg	<b>4%</b>
<b>Total Carbohydrate</b> 21g	<b>8%</b>
Dietary Fiber 1g	<b>4%</b>
Total Sugars 1g	
Includes Added Sugar	<b>%</b>
<b>Protein</b> 4g	
Vitamin D 0µg	<b>0%</b>
Calcium 0mg	<b>0%</b>
Iron 0mg	<b>0%</b>
Potassium 0mg	<b>0%</b>

\* The % Daily Value (DV) tells you how much a nutrient in a serving of food contributes to a daily diet. 2,000 calories a day is used for general nutrition advice.

### \* Benefits

### Ingredients

Bleached Wheat Flour, Shortening (Palm oil), Sugar, Yeast, Salt.

### Allergens

**Contains:**



**Free From:**



### Handling Suggestions

Dry storage - package is kraft bags

### Serving Suggestions

100's of uses. Visit [www.UpperCrustEnt.com](http://www.UpperCrustEnt.com) for recipe ideas. More than just for Japanese cooking - excellent coating for seafood, chicken, crab cakes, onion rings, cheese sticks, Katsu, dessert topping, etc.

### Prep & Cooking Suggestions

Mix Panko with melted butter or oil until moist. Add your favorite spices, parmesan cheese and blend well. Top a piece of fish or chicken with seasoned Panko blend and bake until done. To add a more toasted look can also finish off with top broil.

### Product Specifications

Brand	Manufacturer	Product Category
Upper Crust Enterprises	Upper Crust Enterprises	Bread, Baked & Parbaked

MFG #	SPC #	GTIN	Pack	Pack Desc.
01020	1830	00890749001013	1	1/20 lbs

Gross Weight	Net Weight	Country of Origin	Kosher	Child Nutrition
20.5lb	20lb	USA	Yes	No

Shipping Information						
Length	Width	Height	Volume	TlxHl	Shelf Life	Storage Temp From/To
32in	17in	6in	1.89ft3	5x10	425DAYS	50°F / 110°F



## Upper Crust Enterprises

# 1830 - Panko Lg Japanese Bread Crumb

Authentic Panko - Light Crispy texture never hard or dense - Flaky & delicate Panko - Non-GMO, Vegan, Kosher & Halal - 26 % higher yield vs leading competitor. For product information and samples visit [www.uppercrustent.com](http://www.uppercrustent.com) or call 213-625-0038



### Nutrition Analysis - By Measure

Calories	110kcal	Total Fat	0.5g	Sodium	100mg
Protein	4g	Trans Fats	0g	Calcium	0mg
Total Carbohydrates...	21g	Saturated Fat	0g	Iron	0mg
Sugars	1g	Added Sugars		Potassium	0mg
Dietary Fiber	1g	Polyunsaturated Fat	0g	Zinc	
Lactose		Monounsaturated Fat	0g	Phosphorus	
Sucrose		Cholesterol	0mg		
Vitamin A(IU)	0NIU	Vitamin D	0µg	Thiamin	
Vitamin A(RE)		Vitamin E		Niacin	
Vitamin C	0mg	Folate		Riboflavin	
Magnesium		Vitamin B-6		Vitamin B-1 2	
Monosodium		Sulphites		Nitrates	

### Additional Images

