



Hormel Foods Corporation

# 27408 - Hml Bcn1 18/22 Style 288 Sli

Eliminates the hassles of cooking bacon from raw. Frees up people, equipment and space. From package to plate in moments. Delivers the flavor, texture, and appearance of freshly cooked from raw premium bacon.



## Nutrition Facts

Servings per Container  
Serving size **2Slices (16g)**

Amount per serving  
**Calories 80**

	% Daily Value*
<b>Total Fat</b> 7g	<b>%</b>
Saturated Fat 2.5g	<b>13%</b>
Trans Fat 0g	
<b>Cholesterol</b> 20mg	<b>7%</b>
<b>Sodium</b> 250mg	<b>11%</b>
<b>Total Carbohydrate</b> 0g	<b>0%</b>
Dietary Fiber 0g	<b>0%</b>
Total Sugars 0g	
Includes 0g Added Sugar	<b>0%</b>
<b>Protein</b> 5g	
Vitamin D 0µg	<b>0%</b>
Calcium 0mg	<b>0%</b>
Iron 0mg	<b>0%</b>
Potassium 0mg	<b>0%</b>

\* The % Daily Value (DV) tells you how much a nutrient in a serving of food contributes to a daily diet. 2,000 calories a day is used for general nutrition advice.

### \* Benefits

Eliminates the hassles of cooking bacon from raw. From package to plate in moments. Delivers the flavor, texture, and appearance of freshly cooked from raw premium bacon. Offers the same performance and thickness as an 18/22 slice count raw bacon. Keep Refrigerated. Use anywhere bacon is used on the menu such as breakfast, sandwiches, salads, burgers etc.

### Ingredients

Cured With Water, Salt, Sugar, Sodium Phosphate, Sodium Diacetate, Sodium Erythorbate, Flavoring, Sodium Nitrite.

### ⚠ Allergens

#### Free From:



### Handling Suggestions

RECOMMENDED TEMPERATURE: 34F. MINIMUM TEMPERATURE: 33F. MAXIMUM TEMPERATURE: 40F. STORAGE: KEEP REFRIGERATED.

### Serving Suggestions

### Prep & Cooking Suggestions

HEATING DIRECTIONS

### 📄 Product Specifications

Brand	Manufacturer	Product Category
Hormel Bacon 1	Hormel Foods Corporation	Pork

MFG #	SPC #	GTIN	Pack	Pack Desc.
20174	27408	10037600201749	2	1/288 ea

Gross Weight	Net Weight	Country of Origin	Kosher	Child Nutrition
7.5lb	6.5lb	USA	No	No

Shipping Information						
Length	Width	Height	Volume	TlxHI	Shelf Life	Storage Temp From/To
15.13in	10in	6.63in	0.58ft3	12x6	180DAYS	33°F / 40°F



**Hormel Foods Corporation**

**27408 - Hml Bcn1 18/22 Style 288 Sli**

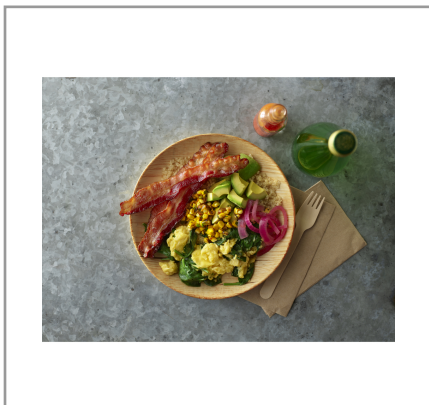
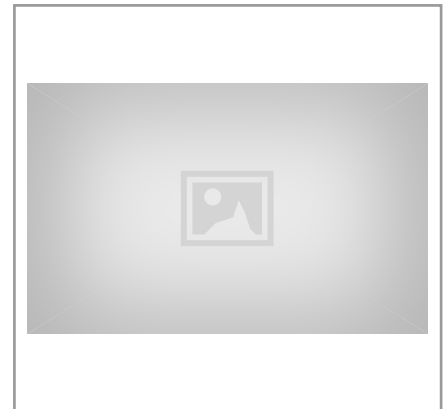
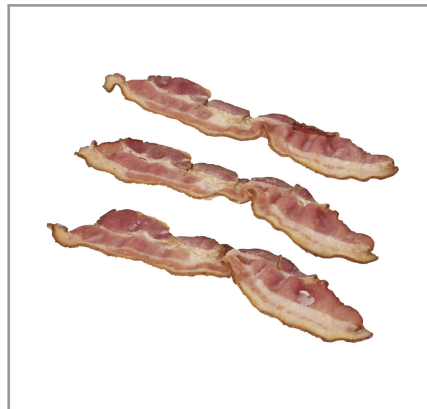
Eliminates the hassles of cooking bacon from raw. Frees up people, equipment and space. From package to plate in moments. Delivers the flavor, texture, and appearance of freshly cooked from raw premium bacon.



Nutrition Analysis - By Serving

Calories	80kcal	Total Fat	7g	Sodium	250mg
Protein	5g	Trans Fats	0g	Calcium	0mg
Total Carbohydrates...	0g	Saturated Fat	2.5g	Iron	0mg
Sugars	0g	Added Sugars	0g	Potassium	0mg
Dietary Fiber	0g	Polyunsaturated Fat		Zinc	
Lactose		Monounsaturated Fat		Phosphorus	
Sucrose		Cholesterol	20mg		
Vitamin A(IU)		Vitamin D	0µg	Thiamin	
Vitamin A(RE)		Vitamin E		Niacin	
Vitamin C		Folate		Riboflavin	
Magnesium		Vitamin B-6		Vitamin B-12	
Monosodium		Sulphites		Nitrates	

Additional Images



**Hormel Foods Corporation**

Product Name: **SMOKED BACON1** (18/22 Style) (288 Sli)

Quantity: 18/22 Style 288 Sli

Net Weight: 2.50 lb (1133g)

Item No: **27408**

UPC: **020000 27408 2**

1. **Moisture Analysis**

Component of Moisture	Moisture (%)	Moisture (g/100g)	Moisture (g)
Moisture	6.00	6.00	15.00

2. **Elemental Analysis (ASTM)**

Component of Analysis	Elemental Analysis (%)	Elemental Analysis (g/100g)	Elemental Analysis (g)
Protein	5.00	5.00	12.50
Total Fat	7.00	7.00	17.50
Sodium	25.00	25.00	62.50

3. **Total Crude Fat**

Component of Analysis	Total Crude Fat (%)	Total Crude Fat (g/100g)	Total Crude Fat (g)
Total Crude Fat	7.00	7.00	17.50

4. **Total Crude Protein**

Component of Analysis	Total Crude Protein (%)	Total Crude Protein (g/100g)	Total Crude Protein (g)
Total Crude Protein	5.00	5.00	12.50

5. **Total Crude Sodium**

Component of Analysis	Total Crude Sodium (%)	Total Crude Sodium (g/100g)	Total Crude Sodium (g)
Total Crude Sodium	25.00	25.00	62.50