


| | | | |
|-----------|--------------|----------------|-----------|
| Plant(s) | Wausau | Resource # | 0183545 |
| Project # | B5151 | Supersedes | -- |
| Rev # | 001 | Effective Date | 3/30/2022 |
| Reason | New Resource | | |

FINISHED PRODUCT SPECIFICATION



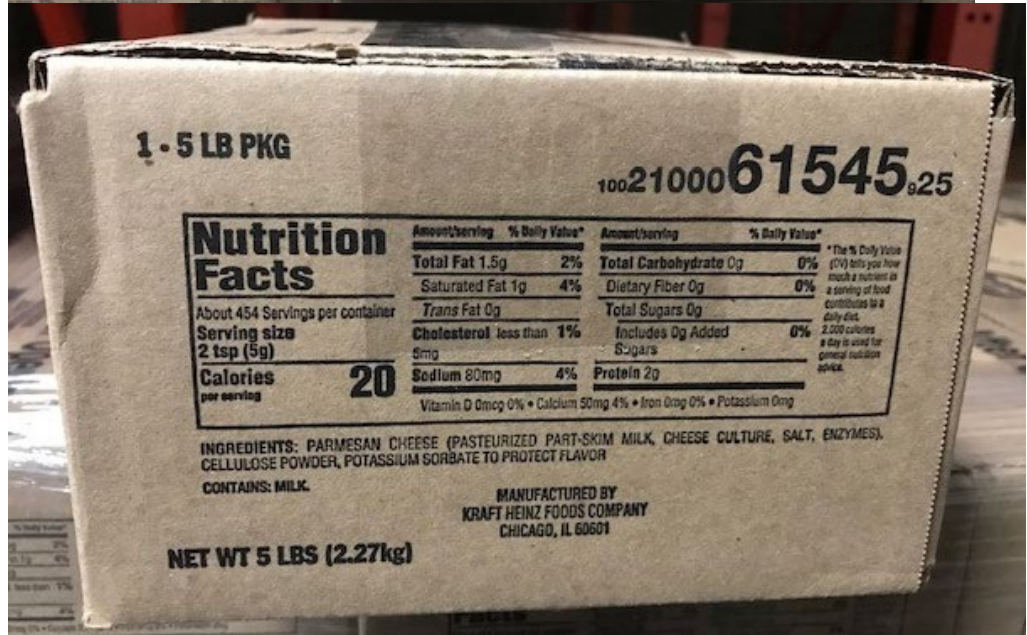
| DESCRIPTION | |
|---|--|
| Resource Number | 0183545 |
| Product Description | 1/5 LB. KRAFT PARMESAN GRATED CHEESE |
| Ingredients Statement (as it appears on the label) | PARMESAN CHEESE (PASTEURIZED PART-SKIM MILK, CHEESE CULTURE, SALT, ENZYMES), CELLULOSE POWDER, POTASSIUM SORBATE TO PROTECT FLAVOR. |
| | CONTAINS: MILK |
| |  Nutritional Facts Panel.JPG |
| Formulation | Parmesan Cheese Grated |
| Usable Shelf-life | 270 days Minimum Remaining Shelf-life at Shipping 30 days |
| Code Date Format | Manufacture Date |
| Kosher Status | None |

| ANALYTICAL CRITERIA | | | |
|----------------------------|-------------------------------|-----------------|------------|
| Chemistry | Limits | Microbiological | Limits |
| Moisture (loss on drying): | Target- 24.1 % Max- 25.0 % | Coliform | < 100 /g |
| Total Fat (dry basis): | 38.0 – 43.0 % | Yeast | < 5,000 /g |
| Salt: | 3.20 – 4.90 % | Mold | < 2,000 /g |

| PACKAGING | |
|--|-------------------|
| -- The product is configured into a case containing 1/5-pounds of grated cheese. | |
| -- Shipping box made of PLAIN BROWN <u>CORRUGATED BOX</u> . | |
| Case Per Layer x Layer (Ti x Hi) | 26 x 9 |
| Cases Per Pallet/Load | 234 |
| Case Outer Dimensions (L/DxWxH) | 9.5 x 7.375 x 4.5 |
| Consumer Trade Item Dimensions L/DxWxH | 20 x 4.0 x 6.5 |
| Case Cube (ft^3) | 0.182 |
| Net Weight (lb.) (case) | 5.0 |
| Gross Weight (lb.) (case) | 5.36509 |
| Max. Allowable Variation | MAV |
| Pallet Type | GMA |
| Country of Origin | USA |
| Foreign Material Policy | N/A |
| Leaker Rate % (24+hrs) | N/A |
| Product 12-digit UPC | 021000615452 |
| Case 14-digit UPC | 10021000615459 |


| | |
|--------------------------------|--|
| Code Date Format Requirements | Month. mfg.(M); day; plant; year, time 05M09W8 13:15 |
| Special Packaging Requirements | Standard packaging requirements |

| | | | |
|-----------|--------------|----------------|-----------|
| Plant(s) | Wausau | Resource # | 0183545 |
| Project # | B5151 | Supersedes | -- |
| Rev # | 001 | Effective Date | 3/30/2022 |
| Reason | New Resource | | |



Shipper Case Label Sample

| | | | |
|-----------|--------------|----------------|-----------|
| Plant(s) | Wausau | Resource # | 0183545 |
| Project # | B5151 | Supersedes | -- |
| Rev # | 001 | Effective Date | 3/30/2022 |
| Reason | New Resource | | |

| | |
|---|---|
| Primary Artwork | To be placed at a later date. |
| Primary Shipper Case & Pallet Configuration |  0183545 KRFT 1-5LB GRAT PARM CASE.pd1 |