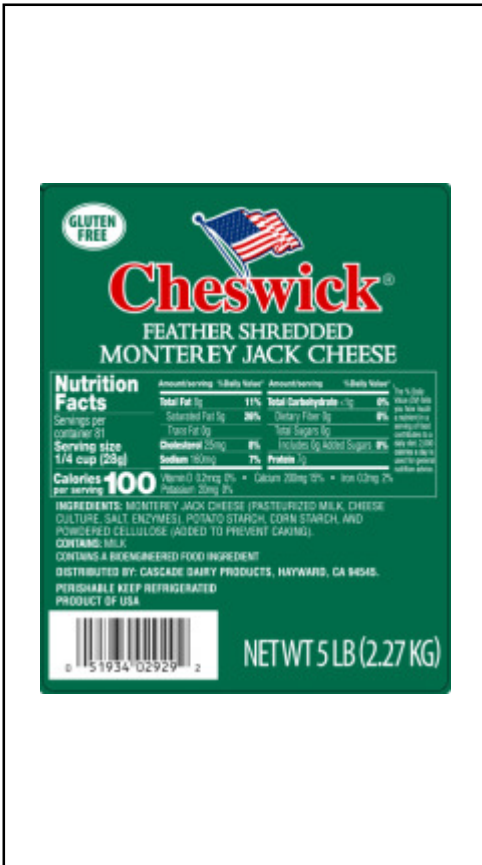




PACIFIC CHEESE CO., INC.
 P.O. BOX 56598 21090 CABOT BLVD.
 HAYWARD, CA 94545-6598
 PHONE: (510) 784-8800 - FAX: (510) 784-8846

4/5# JACK FH CHSWCK CONFIDENTIAL



PC Code: 02929
 UPC Code: 051934029292
 GTIN Code: 10051934029299
 Regulatory Statement: This product is processed and packed in accordance with the Food and Drug Administration and meets all Food, Drug, and Cosmetic Act Guidelines.
 Texture: Firm, smooth, some slight mechanical openness allowed.
 Flavor: A clean, mild, balanced dairy flavor with no off or rancid odors.
 Dimensions LxWxH: 2.00 x 0.13 x 0.19
 Net Weight: 2267 g
 Weight Range: 2,205-2,331.96 g
 Shelf Life: 150 days maintain product at 33-40F
 Melt: A Complete Melt
 Color: NCI 1 - 3

Nutrition Facts		
Servings per container		
Serving Size	28 g	
Amount per Serving		
Calories	100	
		% Daily Value*
Total Fat	8 g	11 %
Saturated Fat	5 g	27 %
Trans Fat	0 g	
Cholesterol	25 mg	8 %
Sodium	170 mg	7 %
Total Carbohydrate	0 g	0 %
Dietary Fiber	0 g	0 %
Sugars	0 g	
Added Sugars	0 g	0 %
Protein	7 g	
Vitamin D	0.2 mcg	0 %
Calcium	210 mg	15 %
Iron	0.2 mg	2 %
Potassium	20 mg	0 %

100g Nutrition Facts		
Servings per container		
Serving Size	100 g	
Amount per Serving		
Calories	373	
		% Daily Value*
Total Fat	30 g	39 %
Saturated Fat	19 g	95 %
Trans Fat	1 g	
Cholesterol	89 mg	30 %
Sodium	600 mg	26 %
Total Carbohydrate	1 g	0 %
Dietary Fiber	0 g	0 %
Sugars	1 g	
Added Sugars	0 g	0 %
Protein	24 g	
Vitamin D	0.6 mcg	3 %
Calcium	746 mg	57 %
Iron	0.72 mg	4 %
Potassium	81 mg	2 %

CODE DATE FORMATS

Seam Code: N/A
 Product Code: PACK ON (MM/DD/YY)(LOT#)(PLANT#)(PC LINE)(TIME)
 Case Label: 02929 4/5LB CHES JACK CHEESE FTHR
 Case Code: PACK ON (MM/DD/YY)(TIME)(COUNT)(LOT#)(PLANT#)

CASE INFORMATION

Dimensions: 11.250 x 9.000 x 14.125 Pack: 4 / 5.00
 Gross Weight: 21.5 Cases/Layer: 17
 Net Weight: 20.00 Layers/Pallet: 5
 Cube: 0.8300 Cases/Pallet: 85

CHEMICAL STANDARDS

Moisture < 44.0%
 Fat (FDB) > 50.0%
 Salt 1.4 - 2.0%
 pH 5.0 - 5.4

MICROBIOLOGICAL STANDARDS

Yeast & Mold < 100 cfu/g
 Coliform < 100 cfu/g
 Salmonella sp negative cfu/375g
 E.coli < 10 cfu/g
 Listeria sp negative cfu/25g
 Staph. Coag+ < 10 cfu/g

This product is classified as a Dairy Allergen.

Ingredient Statement

MONTEREY JACK CHEESE (PASTEURIZED MILK, CHEESE CULTURE, SALT, ENZYMES),

Potato Starch, Corn Starch, Powdered Cellulose (added to prevent caking)

Approved By:

Corporate QA

Signature:

Date: