



atalanta
Delivering the Global Harvest

Product Specification Sheet Grocery

Product Name: "Del Destino" Artichoke Hearts 30-40 CT 6/3 KG

Item Number :	565249	Country of Origin :	SPAIN
Pack Size :	6/3 KG	Shelf Life Unopened/Opened :	3 YEARS / 3 DAYS REFRIGERATED
		Net Weight:	5 LBS 8 OZ (88 OZ) 2.5 KG
		Drain Weight :	3 LBS 6 OZ (54 OZ) 1.55 KG

UPC : 0 71270 38056 7
GTIN : 1 00 71270 38056 4

Case/Package Code : XX5249 YYJJJ
Can Code/Coding Format :

The manufacturer will mark all cans & cases with the Atalanta production date code as follows (using the Julian Date system):
XX5249 YYJJJ,
Example: XX5249 17009 (2016 Jan 9),
XX5249 17124 (2016 May 3)

Product Image	Product Label

Product Properties

Product Description:

Artichokes hearts in quarters removing all non edible parts and adding brine composed of water, salt and citric acid.

Ingredient Statement:

Hearts of Artichokes, Water, Salt, Citric acid and Ascorbic acid added
"May vary depending on Country of Origin, Producer Seasonality"

Kosher (Y/N; type)	Y; Parve
GMO Free (Y/N)	Y
BPA NI (Y/N); <i>Lid, Can, Jar, Environmental</i>	Y (No BPA)
Organic (Y/N; type)	N
Pieces Count (per package)	30 - 40
Easy Open (Y/N; type)	N
Piece Fragments (Range ; %)	0 - 10 %

Physical Properties:

Color	TYPICAL, WHITE-YELLOWISH
Aroma & Flavor	TYPICAL, LIGHT SWEET AND ACID FLAVOUR
Texture	TYPICAL
Appearance	TYPICAL
Size & Shape Range (mm)	55 mm

Chemical Properties:

	Minimum	Maximum	Target
pH (range)	3.7	4.2	3.9
Titration Acidity (range)	N/A	N/A	N/A
°Brix (range)	N/A	N/A	N/A
Salt Percentage – Volhard Method (range)	0.5	2	1
Sulfur Dioxide (range)	N/A	N/A	N/A

% Moisture (range)
Free Fatty Acid Value
Peroxide Value

N/A	N/A	N/A
N/A	N/A	N/A
N/A	N/A	N/A

Microbiological Properties:

Total Plate Count
Yeast and Molds
Coliforms
Staphylococcus, coagulase positive
E.Coli
Listeria
Salmonella

10*3 cfu/g

Absent

Absent

Absent

Absent

Absent

Absent

Nutritionals

(*Daily Value % (DV%) Based on a 2,000 Calorie Diet)

Serving Size:

(As listed on Label)

½ cup (130g)**Serving Size:****100g****Servings Per Container:****About 12****Servings Per Container:****About 10**

	Per Serving	DV%
Calories:	40	
Total Fat (g)	0	0%
<i>*Changed from 65-78g :</i>		
Saturated Fat (g):	0	0%
Trans Fat (g):	0	
Cholesterol (mg):	0	0%
Sodium (mg)	518	23%
<i>*Changed from 2,400-2,300mg:</i>		
Total Carbohydrate (g)	7	3%
<i>*Changed from 300-275g:</i>		
Dietary Fiber (g)	3	11%
<i>*Changed from 25-28g :</i>		
Total Sugars (g):	1	
Added Sugars	0	0%
Protein (g):	3	
Vitamin D (mcg)	0	0%
<i>*Changed from 400IU (10µg) – 20µg:</i>		
Calcium (mg)	31	2%
<i>*Changed from 1,000-1,300mg:</i>		
Potassium (mg)	262	6%
<i>*Changed from 3,500-4,700mg:</i>		
Iron:	1	5%

	Per Serving	DV%
Calories:	25	
Total Fat (g)	0	0%
<i>*Changed from 65-78g :</i>		
Saturated Fat (g):	0	0%
Trans Fat (g):	0	
Cholesterol (mg):	0	0%
Sodium (mg)	398	17%
<i>*Changed from 2,400-2,300mg:</i>		
Total Carbohydrate (g)	5	2%
<i>*Changed from 300-275g:</i>		
Dietary Fiber (g)	2	8%
<i>*Changed from 25-28g :</i>		
Total Sugars (g):	0.7	
Added Sugars	0	0%
Protein (g):	1	
Vitamin D (mcg)	0	0%
<i>*Changed from 400IU (10µg) – 20µg:</i>		
Calcium (mg)	24	2%
<i>*Changed from 1,000-1,300mg:</i>		
Potassium (mg)	201	6%
<i>*Changed from 3,500-4,700mg:</i>		
Iron:	0.5	3%

Packaging

Can Size (mm):	6.10 x 6.10 in
Case Dimensions (in):	19 L x 12.5 W x 6.25 H (in)
Case Cube (ft^):	0.859
Block & Tier:	7 x 8
Cases Per Pallet:	56

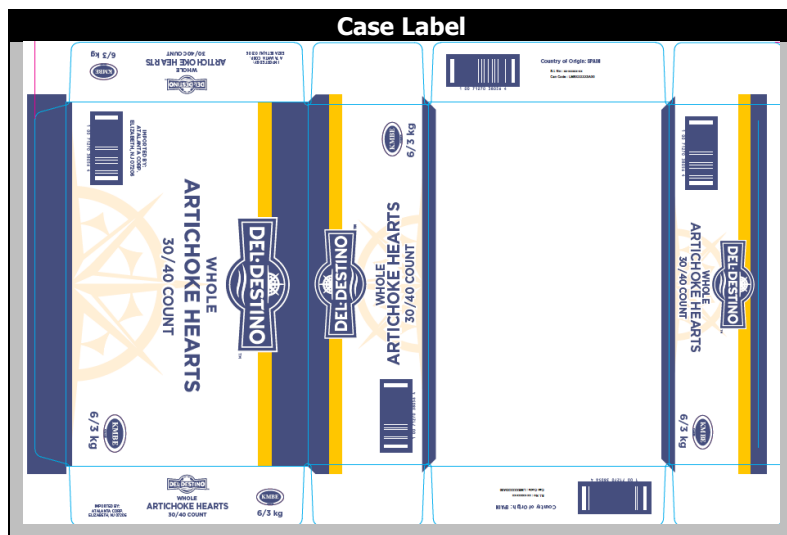
Case Gross Weight:	40 Lbs
Storage Practice:	Store unopened cans in a cool and dry place out of direct sunlight.
Storage Temperature:	40 – 80 °F
Shipping Temperature:	40 – 80 °F

Allergen List

The first column indicated the allergens that may be found in the product, either by addition or by cross contamination. The second column indicates the allergens that are present in other products that are run on the same equipment but at a different time, in the plant. The third column indicates whether any of those ingredients are present in the plant. Each square is answered with a YES or NO and, when applicable, the name of an ingredient.

Components	Present in Product	Present in Other	Present in the Same
-------------------	---------------------------	-------------------------	----------------------------

		Products Manufactured on the Same Line	Manufacturing Plant
<i>Peanuts (including peanut oil)</i>	NO	NO	NO
<i>Tree Nuts</i>	NO	NO	NO
<i>Sesame Seeds</i>	NO	NO	NO
<i>Milk & derivatives (Specify: milk, casein, whey, etc)</i>	NO	NO	NO
<i>Eggs</i>	NO	NO	NO
<i>Fish</i>	NO	NO	NO
<i>Shellfish</i>	NO	NO	NO
<i>Soy (excluding soy oil)</i>	NO	NO	NO
<i>Wheat (Gluten)</i>	NO	NO	NO
<i>Sulphites</i>	NO	NO	NO
<i>Corn</i>	NO	NO	NO
<i>Poppy Seeds</i>	NO	NO	NO
<i>Sunflower Seeds</i>	NO	NO	NO
<i>MSG (monosodium glutamate)</i>	NO	NO	NO
<i>Tartrazine</i>	NO	NO	NO



Supplier No.	S1295
Manufacturer No.	S1295
Audit / Expiry Date	BRC/MAY2019