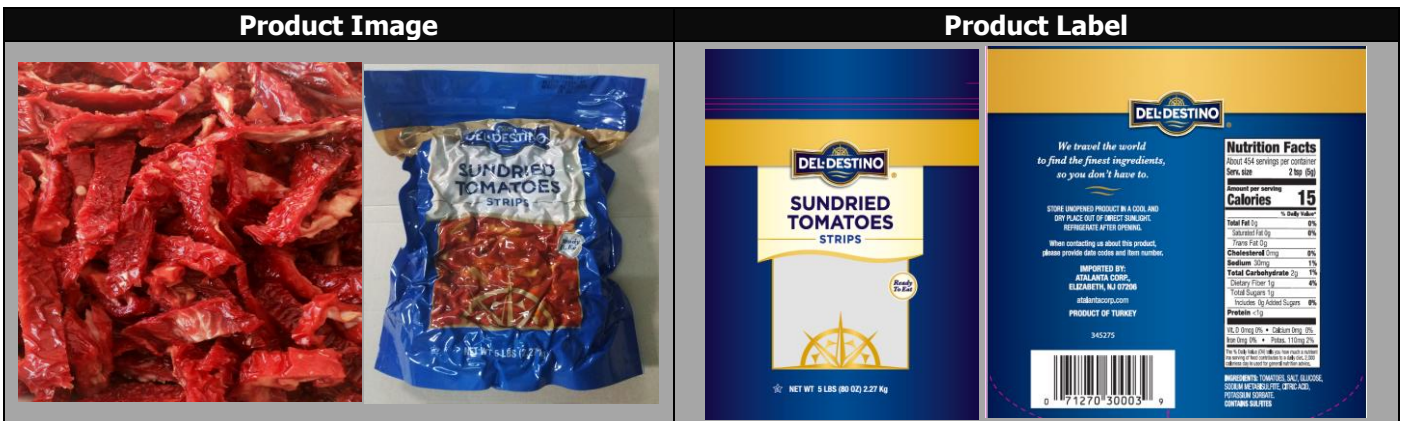




Product Name: "Del Destino" Sundried Tomatoes, Strips 4/5 Lbs

Item Number:	345275	Country of Origin:	Turkey
Pack Size:	4 /5 LB	Shelf Life Unopened/Opened:	24 Months/2 Months Refrigerated
Unit Net Weight:	5 Lbs (2.27 Kg)	Unit Drain Weight:	N/A

UPC :	0 71270 30003 9	Case/Package Code:	15-11506-65
			XX5275 18 061 AV
			BEST BY: 03/02/2020
			15:00
GTIN :	400 71270 30003 7	Unit Can Code/Coding Format:	PO number
			Item year day producers code
			Best by: month/day/year
			Hour



Product Properties

Product Description:	Fresh tomatoes cut, halved and sundried under controlled conditions salt and sulphur is added according to customer specs. Washed with microbiologically controlled water and inspected before packaging
Ingredient Statement:	TOMATOES, SALT, GLUCOSE, SODIUM METABISULFITE, CITRIC ACID, POTASSIUM SORBATE.
	CONTAINS SULFITES

Kosher (Y/N; type)	Y; STAR K
GMO Free (Y/N)	Y
BPA NI (Y/N); Lid, Can, Jar, Environmental	N
Organic (Y/N; type)	N
Pieces Count (per package)	-
Easy Open (Y/N; type)	Y
Piece Fragments (Range ; %)	N/A

Physical Properties:

Color	Bright red to red
Aroma & Flavor	Characteristic of sun dried tomatoes, no off-odors or flavors
Texture	Soft and easy to eat
Appearance	Clean, without any foreign matter
Size & Shape Range (mm)	Length (30-50 mm), Width (7-12 mm)
Vacuum	Yes

Chemical Properties:

pH (range)
Titration Acidity (range)
°Brix (range)
Salt Percentage – Volhard Method (range)
Sulfur Dioxide (range)
% Moisture (range)
Free Fatty Acid Value
Peroxide Value

Minimum	Maximum	Target
4.0	5.0	4.3
2.0	3.0	2.5
N/A	N/A	N/A
2.8%	3.6%	3%
2000 ppm	3000 ppm	2500 ppm
38	42	40
N/A	N/A	N/A
N/A	N/A	N/A

Microbiological Properties:

Total Plate Count
Yeast and Molds
Coliforms
Staphylococcus, coagulase positive
E.Coli
Listeria
Salmonella

<100,000 cfu/g
<5000 cfu/g
<10 cfu/g
NA
None
NA
NA

Nutritionals
 (*Daily Value % (DV%) Based on a 2,000 Calorie Diet)

Serving Size:

(As listed on Label)

2 tsp (5g)

Serving Size:

100g

Servings Per Container:

454 servings

Servings Per Container:

About 23

	Per Serving	DV%
Calories:	15	
Total Fat (g)	0	0%
<i>*Changed from 65-78g :</i>		
Saturated Fat (g):	0	0%
Trans Fat (g):	0	
Cholesterol (mg):	0	0%
Sodium (mg)	30	1%
<i>*Changed from 2,400-2,300mg:</i>		
Total Carbohydrate (g)	2	1%
<i>*Changed from 300-275g:</i>		
Dietary Fiber (g)	1	4%
<i>*Changed from 25-28g :</i>		
Total Sugars (g):	1	
Added Sugars	0	0%
Protein (g):	<1	
Vitamin D (mcg)	0	0%
<i>*Changed from 400IU (10µg) – 20µg:</i>		
Calcium (mg)	0	0%
<i>*Changed from 1,000-1,300mg:</i>		
Potassium (mg)	110	2%
<i>*Changed from 3,500-4,700mg:</i>		
Iron (mg):	0	0%

	Per Serving	DV%
Calories:	300	
Total Fat (g)	0	0%
<i>*Changed from 65-78g :</i>		
Saturated Fat (g):	0	0%
Trans Fat (g):	0	
Cholesterol (mg):	0	0%
Sodium (mg)	600	20%
<i>*Changed from 2,400-2,300mg:</i>		
Total Carbohydrate (g)	40	20%
<i>*Changed from 300-275g:</i>		
Dietary Fiber (g)	20	80%
<i>*Changed from 25-28g :</i>		
Total Sugars (g):	20	
Added Sugars	3	6%
Protein (g):	<20	
Vitamin D (mcg)	0	0%
<i>*Changed from 400IU (10µg) – 20µg:</i>		
Calcium (mg)	0	0%
<i>*Changed from 1,000-1,300mg:</i>		
Potassium	2117	45%
<i>*Changed from 3,500-4,700mg:</i>		
Iron (mg):	0	0%

*Please note that changes in the Daily Values amounts and Nutrients declared. Serving Sizes has also changed for many commodities, please reference the attached document for appropriate serving size.

Packaging

Individual Unit

Dimension: 10.75 x 13.97 in

Case Gross Weight: 21 Lbs

Case Dimensions (in): 19"(L) x 12.5"(W) x 4.5" (H)

Storage Practice: Store unopened product in a cool and dry place out of direct sunlight.

Case Cube (ft[^]):	0.6185	Storage Temperature:	40 – 80 °F
Block & Tier:	8 x 10	Shipping Temperature:	40 – 80 °F
Cases Per Pallet:	80		

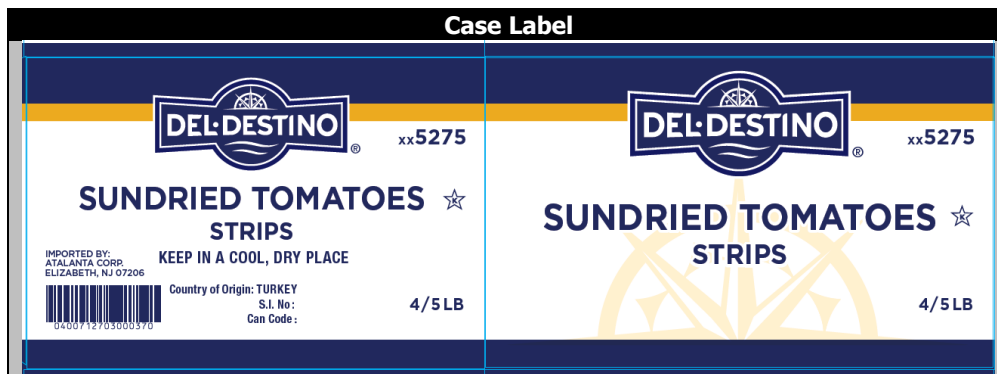
Allergen List

The first column indicated the allergens that may be found in the product, either by addition or by cross contamination. The second column indicates the allergens that are present in other products that are run on the same equipment but at a different time, in the plant. The third column indicates whether any of those ingredients are present in the plant.

Each square is answered with a YES or NO and, when applicable, the name of an ingredient.

Components	Present in Product	Present in Other Products Manufactured on the Same Line	Present in the Same Manufacturing Plant
Peanuts (including peanut oil)	No	No	No
Tree Nuts	No	No	No
Sesame Seeds	No	No	No
Milk & derivatives (Specify: milk, casein, whey, etc)	No	No	No
Eggs	No	No	No
Fish	No	No	No
Shellfish	No	No	No
Soy (excluding soy oil)	No	No	No
Wheat (Gluten)	No	No	No
Sulphites	Yes	Yes	Yes
Corn	No	No	No
Poppy Seeds	No	No	No
Sunflower Seeds	No	No	No
MSG (monosodium glutamate)	No	No	No
Tartrazine	No	No	Yes

Case Label



Supplier No.	S142
Manufacturer No.	F34HAS