



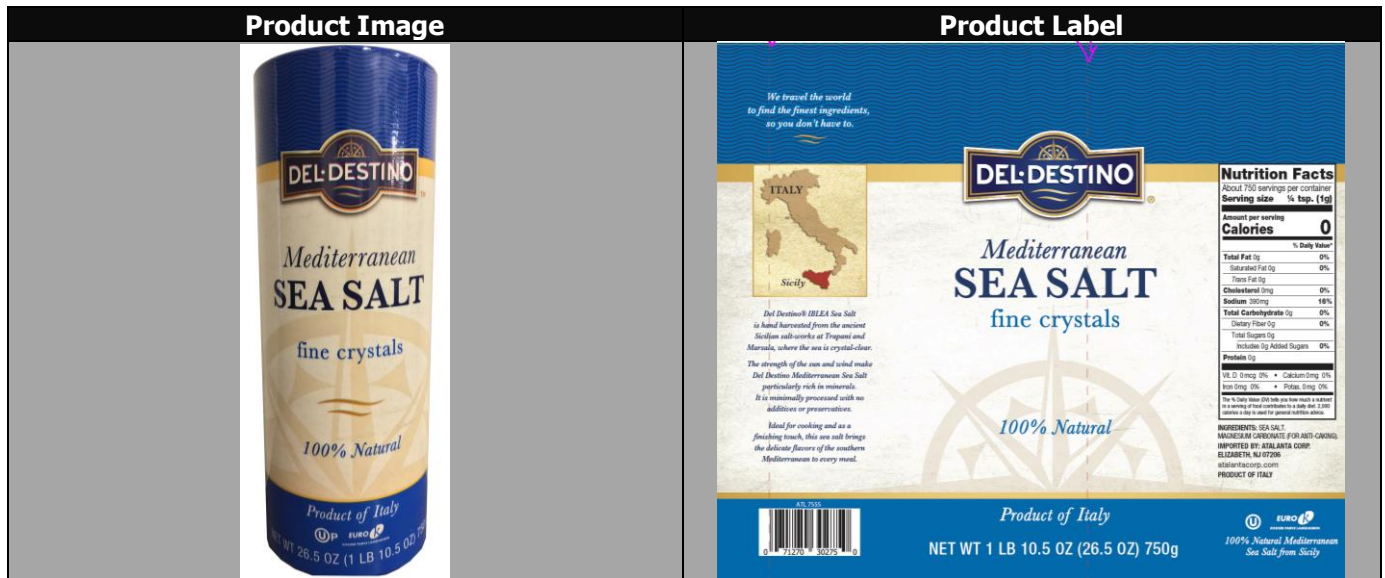
atalanta
Delivering the Global Harvest

**Product Specification Sheet
Grocery**

Product Name: "Del Destino" Fine Sea Salt 12/26.5 oz (K)

Item Number:	057555	Country of Origin:	ITALY
Pack Size:	12/26.5 OZ	Shelf Life Unopened/Opened:	5 YEARS
Unit Net Weight:	1 lb 10.5 oz (26.5 oz) 750g	Unit Drain Weight:	N/A

UPC :	0 71270 30275 0	Case/Package Code:	YOUR REF: 15-12516 OUR REF: L T 084
GTIN :	1 00 71270 30275 7	Unit Can Code/Coding Format:	L T 084 – L(lot) M(Year 2019) 141(Day of the Year)



Product Properties

Product Description: IBLEA Sea Salt comes from the ancient salt-works at Trapani and Marsala, where the sea is crystal-clear and, together with the strength of the sun and the wind, gives a salt that is particularly rich in the valuable oligoelements contained in the sea water (Magnesium and Potassium)

Ingredient Statement: Sea Salt, Magnesium Carbonate (for anti-caking)

Kosher (Y/N; type)	Y; OU
GMO Free (Y/N)	Y
BPA NI (Y/N); Lid, Can, Jar, Environmental	Y (No BPA)
Organic (Y/N; type)	N/A
Pieces Count (per package)	12
Easy Open (Y/N; type)	Y
Piece Fragments (Range ; %)	N/A

Physical Properties:

Color	WHITE
Aroma & Flavor	typical: ABSENCE OF EXTRANEIOUS TASTES
Texture	GRAIN SIZE OF PARTICLE SIZE DISTRIBUTION ≥ 0.9 mm 9 % ≤ 0.9 mm 91-100 %
Appearance	N.A.
Size & Shape Range (mm)	N.A.

Vacuum

N.A.

Chemical Properties:

pH (range)
Titration Acidity (range)
°Brix (range)
Salt Percentage – Volhard Method (range)
Sulfur Dioxide (range)

% Moisture (range)
Free Fatty Acid Value
Peroxide Value

Minimum	Maximum	Target
7.2	7.2	6.8
N.A.	N.A.	N.A.
N.A.	N.A.	N.A.
>97%	N/A	98.5%
N.A.	N.A.	N.A.
N.A.	< 0.5	between 0.1% and 0.3%
N.A.	N.A.	N.A.
N.A.	N.A.	N.A.

Microbiological Properties:

Total Plate Count
Yeast and Molds
Coliforms
Staphylococcus, coagulase positive
E.Coli
Listeria
Salmonella

N.A.
N.A.
N.A.
N.A.
N.A.
N.A.
N.A.

Nutritionals
 (*Daily Value % (DV%) Based on a 2,000 Calorie Diet)

Serving Size:
 (As listed on Label)

1/4 tsp (1g)
About 750

Serving Size:

100g
About 7.5

Servings Per Container:

Servings Per Container:

	Per Serving	DV%
Calories:	0	
Total Fat (g)	0	0%
<i>*Changed from 65-78g :</i>		
Saturated Fat (g):	0	0%
Trans Fat (g):	0	
Cholesterol (mg):	0	0%
Sodium (mg)	390	16%
<i>*Changed from 2,400-2,300mg:</i>		
Total Carbohydrate (g)	0	0%
<i>*Changed from 300-275g:</i>		
Dietary Fiber (g)	0	0%
<i>*Changed from 25-28g :</i>		
Total Sugars (g):	0	
Added Sugars	0	0%
Protein (g):	0	
Vitamin D (mcg)	0	0%
<i>*Changed from 400IU (10µg) – 20µg:</i>		
Calcium (mg)	0	0%
<i>*Changed from 1,000-1,300mg:</i>		
Potassium (mg)	0	0%
<i>*Changed from 3,500-4,700mg:</i>		
Iron:	0	0%

	Per Serving	DV%
Calories:	0	
Total Fat (g)	0	0%
<i>*Changed from 65-78g :</i>		
Saturated Fat (g):	0	0%
Trans Fat (g):	0	
Cholesterol (mg):	0	0%
Sodium (mg)	39000	1696%
<i>*Changed from 2,400-2,300mg:</i>		
Total Carbohydrate (g)	0	0%
<i>*Changed from 300-275g:</i>		
Dietary Fiber (g)	0	0%
<i>*Changed from 25-28g :</i>		
Total Sugars (g):	0	
Added Sugars	0	0%
Protein (g):	0	
Vitamin D (mcg)	0	0%
<i>*Changed from 400IU (10µg) – 20µg:</i>		
Calcium (mg)	0	0%
<i>*Changed from 1,000-1,300mg:</i>		
Potassium (mg)	0	0%
<i>*Changed from 3,500-4,700mg:</i>		
Iron:	0	0%

*Please note that changes in the Daily Values amounts and Nutrients declared. Serving Sizes has also changed for many commodities, please reference the attached document for appropriate serving size.

Packaging

Individual Unit Dimension:	L" 2.91 x H" 7.68
Case Dimensions (in):	L" 12 x W" 9.1 x H" 8.25
Case Cube (ft^):	0.5214
Block & Tier:	17 x 6
Cases Per Pallet:	102

Case Gross Weight:	23 lbs
Storage Practice:	Keep product in dry cool place away from direct sunlight
Storage Temperature:	40-80 °F
Shipping Temperature:	40-80 °F

Allergen List

The first column indicated the allergens that may be found in the product, either by addition or by cross contamination. The second column indicates the allergens that are present in other products that are run on the same equipment but at a different time, in the plant. The third column indicates whether any of those ingredients are present in the plant. Each square is answered with a YES or NO and, when applicable, the name of an ingredient.

Components	Present in Product	Present in Other Products Manufactured on the Same Line	Present in the Same Manufacturing Plant
<i>Peanuts (including peanut oil)</i>	NO	NO	NO
<i>Tree Nuts</i>	NO	NO	NO
<i>Sesame Seeds</i>	NO	NO	NO
<i>Milk & derivatives (Specify: milk, casein, whey, etc)</i>	NO	NO	NO
<i>Eggs</i>	NO	NO	NO
<i>Fish</i>	NO	NO	NO
<i>Shellfish</i>	NO	NO	NO
<i>Soy (excluding soy oil)</i>	NO	NO	NO
<i>Wheat (Gluten)</i>	NO	NO	NO
<i>Sulphites</i>	NO	NO	NO
<i>Corn</i>	NO	NO	NO
<i>Poppy Seeds</i>	NO	NO	NO
<i>Sunflower Seeds</i>	NO	NO	NO
<i>MSG (monosodium glutamate)</i>	NO	NO	NO
<i>Tartrazine</i>	NO	NO	NO



Supplier No.	S972
Manufacturer No.	F05ISD
Audit / Expiry Date	BRC/NOV2020