



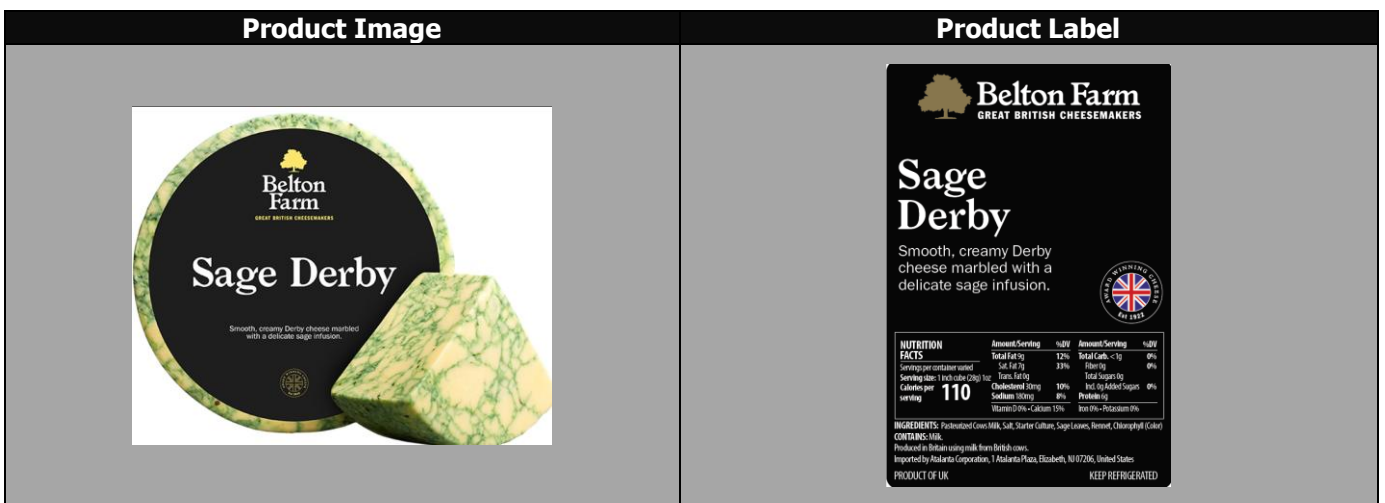
atalanta
Delivering the Global Harvest

Product Specification Sheet

SAGE DERBY, BELTON FARMS 2/4.4 LB

Item Number :	200486	Country of Origin :	United Kingdom
Pack Size :	2/4.4 lbs	RW or EW weight :	RW
Brand on Box	Belton	Brand on Item:	Belton

ON Box	ON Product	UPC :	0 60200 95006 2	Date Code :	Pack date
		GTIN :	90 0 60200 95006 5	Date Code Format :	MM.DD.YYYY
		EAN :		Date Code Location:	Base label/case



Product Properties

Ingredient/Product Statement :	Cows Milk, Salt, Starter Culture, Sage Leaves, Rennet, Chlorophyll (color)
Contains:	Milk

Kosher (Y/N; Certification)	N	Rind (Y/N)	N
Halal (Y/N)	N	Rind Edible (Y/N)	N
Organic (Y/N)	N	RBST Free (Y/N)	Y
Piece Count (Case)	2	Preservatives (Y/N)	N
Maturity/Aged	4-5 months	Lactose Free (Y/N)	N
Milk Type	Cows	GMO Free (Y/N)	Y
Rennet Type	Microbial	Casing (Y/N; Type)	Y, cardboard box
Special Pre-Order (Y/N)	N	Pasteurized/Thermalized/Raw/Other	Pasteurised
BPA NI (Y/N);	Y		

Shelf Life:

Shelf Life from Packing	240 days	Shelf Life if Frozen	N/A
Storage Temperature	33-40°	Shelf Life Defrosted	N/A

Physical Properties:

Color	Pale yellow and green marbled colour with specs of sage
Cheese Type	Hard cheese with sage leaf and chlorophyll
Aroma & Flavor	Mellow cheese with a subtle sage flavor
Texture	Creamy texture
Appearance	Pale yellow and green marbled color with specs of sage
Body	Yielding body
Shape	Ring

Chemical Analysis:

		Specification	Range
Moisture	%	<39.0%	
Fat in Dry Matter	%	>53.3%	
Milk Fat	%		
Salt		1.80	
Water Activity			
pH			
Ash			

Microbiological Analysis:

	Unit	Specification	Method
Coliforms	cfu/g	N/A	
E. coli.	cfu/g	<10cfu/g	Petrifilm
Yeast	cfu/g	<1000cfu/g	Petrifilm
Moulds	cfu/g	<1000cfu/g	Petrifilm
Salmonella	cfu/g	Absent in 25g	Nordic committee, food analysis method no 71
Listeria	cfu/g	Absent in 25g	Listeria enrichment broth & selective agar
Enterobacteriaceae	cfu/g	<100cfu/g	Petrifilm
Staphylococcus aureus	cfu/g	<20cfu/g	Baird Parker spread plate method
Staphylococcus coagulase	cfu/g	<20cfu/g	Baird Parker spread plate method

Nutritionals
(*Daily Value % Based on a 2,000 Calorie Diet)

Serving Size: (As listed on Label)	100 g	Serving Size:	1 inch cube (28g) 1oz
Servings Per Container:	varied	Servings Per Container:	varied
	Per Serving		Per Serving
	DV%		DV%
Calories:	393	Calories:	110
Total Fat (g)	32 32%	Total Fat (g)	9 12%
<i>*Changed from 65-78g :</i>		<i>*Changed from 65-78g :</i>	
Saturated Fat (g):	25 118%	Saturated Fat (g):	7 33%
Trans Fat (g):	0	Trans Fat (g):	0
Cholesterol (mg):	107 35.7%	Cholesterol (mg):	30 10%
Sodium (mg)	642 28.5%	Sodium (mg)	180 8%
<i>*Changed from 2,400-2,300mg:</i>		<i>*Changed from 2,400-2,300mg:</i>	
Total Carbohydrate (g)	<1 0%	Total Carbohydrate (g)	<1 0%
<i>*Changed from 300-275g:</i>		<i>*Changed from 300-275g:</i>	
Dietary Fiber (g)	0 0%	Dietary Fiber (g)	0 0%
<i>*Changed from 25-28g :</i>		<i>*Changed from 25-28g :</i>	
Total Sugars (g):	0	Total Sugars (g):	0
Added Sugars	0 0%	Added Sugars	0 0%
Protein (g):	21.43	Protein (g):	6
Vitamin D (mcg)	0 0%	Vitamin D (mcg)	0 0%
<i>*Changed from 400IU (10µg) - 20µg:</i>		<i>*Changed from 400IU (10µg) - 20µg:</i>	
Calcium (mg)	696 53.6%	Calcium (mg)	195 15%
<i>*Changed from 1,000-1,300mg:</i>		<i>*Changed from 1,000-1,300mg:</i>	
Potassium (mg)	0 0%	Potassium (mg)	0 0%
<i>*Changed from 3,500-4,700mg:</i>		<i>*Changed from 3,500-4,700mg:</i>	
Iron:	0 0%	Iron:	0 0%

Packaging

Cases Per Pallet	228	Case Dimensions (in.)	9.8 x 9.8 x 3.7
Block & Tier	19 x 12	Unit Dimensions (in.)	9.7 x 3.6
Case Cube (ft^)	0.2056	Gross Weight (Avg.)	9 lbs
Packaging Type	Cardboard	Tare Weight	0.2 lbs
		Net Weight (Avg.)	8.8 lbs

Allergen List

The first column indicated the allergens that may be found in the product, either by addition or by cross contamination. The second column indicates the allergens that are present in other products that are run on the same equipment but at a different time, in the plant. The third column indicates whether any of those ingredients are present in the plant. Each square is answered with a YES or NO and, when applicable, the name of an ingredient.

Components	Present in Product	Present in Other Products Manufactured on the Same Line	Present in the Same Manufacturing Plant
<i>Peanuts (including peanut oil)</i>	No	No	No
<i>Tree Nuts</i>	No	No	No
<i>Sesame Seeds</i>	No	No	No
<i>Milk & derivatives (Specify: milk, casein, whey, etc)</i>	Yes, MILK	Yes, MILK	Yes, MILK
<i>Eggs</i>	No	No	No
<i>Fish</i>	No	No	No
<i>Shellfish</i>	No	No	No
<i>Soy (excluding soy oil)</i>	No	No	No
<i>Wheat (Gluten)</i>	No	No	No
<i>Sulphites</i>	No	No	No
<i>Corn</i>	No	No	No
<i>Poppy Seeds</i>	No	No	No
<i>Sunflower Seeds</i>	No	No	No
<i>MSG (monosodium glutamate)</i>	No	No	No
<i>Tartrazine</i>	No	No	No

Case Label

CONTAINS: MILK

PACK DATE 04.09.2018	WEIGHT 3.84Lb	PACK CODE 42418
-------------------------	------------------	--------------------

UK
NP 008
EC

KEEP REFRIGERATED

IMPORTED BY ATALANTA CORPORATION

SAGE DERBY

2 X 4Lb

PACK DATE 04.09.2018	SUPPLIER CODE: 4137
ATALANTA	ATALANTA CODE: 200486
PD 05-36453	CONTAINS: MILK
FILE 16B, REF 59494	

NET WEIGHT
3.84Lb

UK
NP 008
EC

(09) 90060200950055 (3103) 001740 (10) 042418

PRODUCT OF UNITED KINGDOM

KEEP REFRIGERATED

Supplier No.	S212
Manufacturer No.	F20BEL
Audit / Expiry Date	BRC/JUN2018