



BEEF LOIN, BOTTOM SIRLOIN BUTT, TRI-TIP, PEELED			
Base Code – 396, 397	185D	PSO# 1	N/A
Document Number	SPEC-185D	Page No.	Page 1 of 3
Date Issued	08/29/2018	Revision Date	12/17/2021
Establishment #		BRC Site Code	
45471		1026545	

Description:

Product description:	BEEF LOIN, BOTTOM SIRLOIN BUTT, TRI-TIP, PEELED
Storage Conditions:	28°-35°F
Total Shelf Life:	45 days Fresh/1 year Frozen

This item consists of the *tensor fasciae* muscle from the bottom sirloin butt. The boneless tri-tip is separated from the ball tip and the flap through the natural seam. Any cartilage or connective tissue shall be excluded.

Breaks:

Round/Loin Separation: The loin is separated from the round by a straight cut across the sacral vertebrae 5 ½ joints from the start of the tail join through the hip socket exposing the ball end of the femur bone approximately ¾” in diameter.

Sirloin/Loin Separation: The separation of the sirloin from the shortloin is achieved by making a saw cut, starting at a point on the sixth lumbar vertebrae (approximately ¼ to 1/3 vertebrae), continuing in a straight line along the anterior portion of the hip bone to produce a saw cut which is perpendicular to the backline of the loin. The separation should leave a small amount of white tissue on the tail portion of the strip. The angle of the cut must not exceed 90 degrees to the backline of the strip (inboard break) or show evidence of the hip (pin) bone in the face of the strip.

Top/Bottom Butt Separation: The top sirloin must be separated from the bottom butt by a cut following the natural muscle seam (blue tissue), exposing the lower section of the top butt, exiting perpendicular to the skin surface and passing the knife immediately below the pin bone. The top sirloin portion should not be scored, and no more than ½” of tri-tip or 1” of ball tip will be allowed on the top sirloin.

Breaking Procedure:

- A. Separate the bottom butt from the top butt with a cut along the natural seam, continuing in the same plane leaving a portion of the bottom butt attached to the top butt. This cut needs to stay in the tri-tip so that no top butt is on the tri-tip. However, no more than 1/4 inch of tri-tip should be on the top butt.
- B. Remove the flap meat and ball tip along the natural seam.
- C. Trim the remaining tri-tip leaving only flake fat on all surfaces.

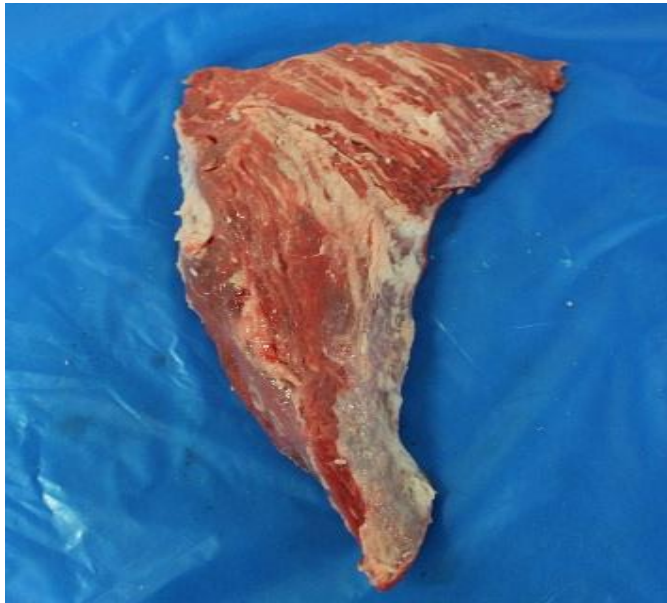


BEEF LOIN, BOTTOM SIRLOIN BUTT, TRI-TIP, PEELED			
Base Code – 396, 397	185D	PSO# 1	N/A
Document Number	SPEC-185D	Page No.	Page 2 of 3
Date Issued	08/29/2018	Revision Date	12/17/2021
Establishment #		BRC Site Code	
45471		1026545	

Finished Product Trim Specifications:

- A. The tri-tip shall be trimmed to thin blue tissue with flake fat allowed. Any heavy opaque tissue will be removed. Flake fat is defined as .1”x1” area. Each piece shall have no more than 4” of cumulative flake fat.
- B. Some ball tip can remain, shall not exceed more than ¼ inch deep and 1” wide.
- C. Scores will not exceed 3 inches long x 1/2 inch deep.
- D. Any ragged edges will be trimmed.
- E. No partial pieces can go into export small box products.
- F. All ink stains will be removed.
- G. All discoloration and dry meat will be removed.
- H. All bone and cartilage will be removed.

Product Pictures:



Packaging Pictures:



BEEF LOIN, BOTTOM SIRLOIN BUTT, TRI-TIP, PEELED			
Base Code – 396, 397	185D	PSO# 1	N/A
Document Number	SPEC-185D	Page No.	Page 3 of 3
Date Issued	08/29/2018	Revision Date	12/17/2021
Establishment #		BRC Site Code	
45471		1026545	

Packaging Procedure:

Brand	Base Code	Box Type	Box Weight Class	Vacuum Bag	Bag Size	Bag Brand	Graded or Ungraded
DemKota Gold	396	60# Breaker	Catch Weight	Standard Shrink	13x22	DemKota	Graded
DemKota Elite	396, 397	60# Elite Breaker 40# Elite Breaker w/ Shelf	Catch Weight	Standard Shrink	13x22 9x22	DemKota	Graded
DemKota Legacy	396	60# Breaker	Catch Weight	Standard Shrink	13x22	DemKota	Ungraded
Legacy Angus	396	60# LA Breaker 40# LA Breaker w/ shelf	Catch Weight	Standard Shrink	13x22 10x16	DemKota	Ungraded
CAB	396	60# CAB Prime 60# CAB Choice	Catch Weight	Standard Shrink	13x22	CAB Prime CAB Choice	Graded
Allen Brothers	3960	40# Allen Bros	Catch Weight	Standard Shrink	9x22	Allen Bros	Graded
Meyer's GFNA	3960	60# Meyer	Catch Weight	Standard Shrink	13x22	DemKota	Graded

SKU Details: