



atalanta
Delivering the Global Harvest

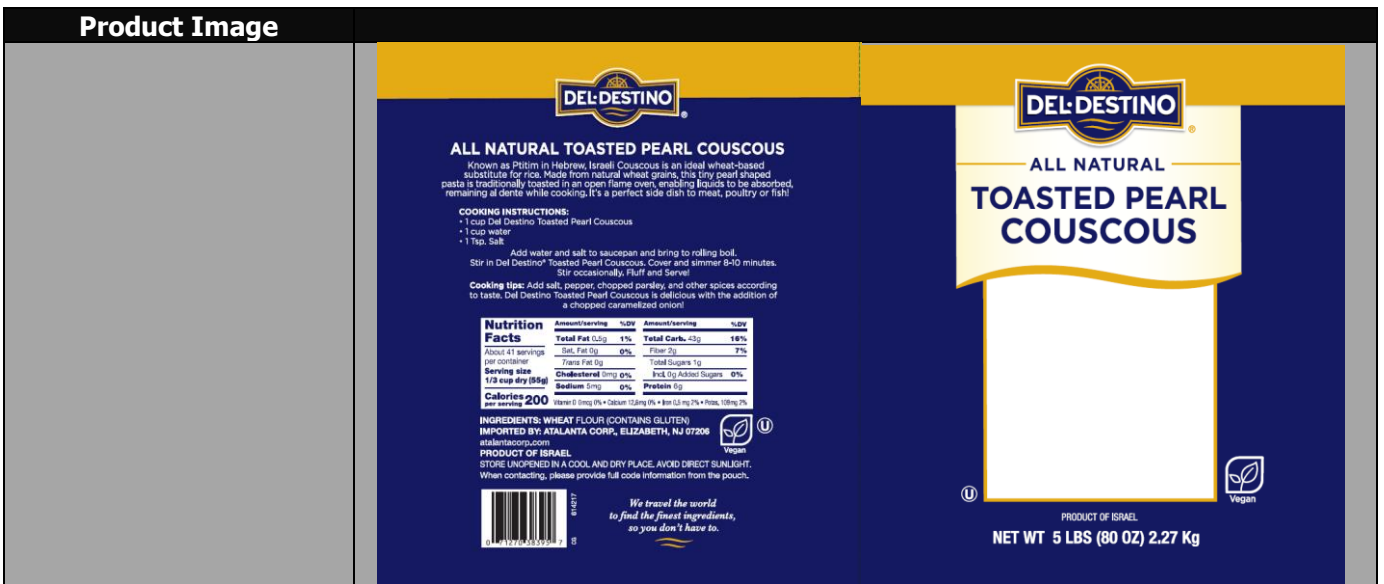
Product Specification Sheet
Grocery

Product Name: "Del Destino" Toasted Couscous, 4/5 lbs

Item Number:	614217	Country of Origin:	ISRAEL
Pack Size:	4/5 Lbs	Shelf Life Unopened/Opened:	18 months
Unit Net Weight:	5 lbs (80 oz) 2.27 Kg	Unit Drain Weight:	N/A

UPC :	0 71270 38395 7	Case/Package Code:	XX4217 YYJJJ
GTIN :	10 0 71270 38395 4	Unit Can Code/Coding Format:	The manufacturer will mark all jars & cases with the Atalanta production date code as follows (using the Julian Date system): XX4217 YYJJJ

**Example: XX4217 17009 (2017 Jan 9),
XX4217 17280 (2017 Oct 7)**



Product Properties

Product Description: Giant Israeli couscous (toasted pasta)
100% wheat grains toasted in an open flame oven
Vegetarian and vegan.

Ingredient Statement: Wheat flour
Contains: Wheat

Kosher (Y/N; type)	Y, OU
GMO Free (Y/N)	Y
BPA NI (Y/N); Lid, Can, Jar, Environmental	Y (no BPA)
Organic (Y/N; type)	N
Pieces Count (per package)	N/A
Easy Open (Y/N; type)	Y
Piece Fragments (Range ; %)	May contain 1% of broken , extra toasted- burned, other shape of the same product\3 color\whole wheat.

Physical Properties:
Color bright brown-off white
Aroma & Flavor Like a small al dente toasted pasta cuts

Texture	Like a small pasta cuts
Appearance	Round small pasta cuts
Size & Shape Range (mm)	Round 3..8 mm (+\ - 10%)
Vacuum	NO

Chemical Properties:

	Minimum	Maximum	Target
pH (range)	N/A	N/A	N/A
Titration Acidity (range)	N/A	N/A	N/A
°Brix (range)	N/A	N/A	N/A
Salt Percentage – Volhard Method (range)	N/A	N/A	N/A
Sulfur Dioxide (range)	N/A	N/A	N/A
% Moisture (range)	6	13	9
Free Fatty Acid Value	N/A	N/A	N/A
Peroxide Value	N/A	N/A	N/A

Microbiological Properties:

Total Plate Count	<100000 (1 gr)
Yeast and Molds	<500 (1 gr)
Coliforms	<1000 (1 gr)
Staphylococcus, coagulase positive	<100 (1 gr)
E.Coli	<10 (1 gr)
Listeria	Not tested
Salmonella	Negative in 20 g

Nutritionals
 (*Daily Value % (DV%) Based on a 2,000 Calorie Diet)

	1/3 CUP DRY PRODUCT (55 g)	Serving Size: 100g	
Serving Size: (As listed on Label)	1/3 CUP DRY PRODUCT (55 g)	Serving Size:	100g
Servings Per Container:	About 41	Servings Per Container:	About 23
	Per Serving	DV%	
Calories:	200		Calories:
Total Fat (g)	0.5	1%	Total Fat (g)
<i>*Changed from 65-78g :</i>			<i>*Changed from 65-78g :</i>
Saturated Fat (g):	0	0%	Saturated Fat (g):
Trans Fat (g):	0		Trans Fat (g):
Cholesterol (mg):	0	0%	Cholesterol (mg):
Sodium (mg)	5	0%	Sodium (mg)
<i>*Changed from 2,400–2,300mg:</i>			<i>*Changed from 2,400–2,300mg:</i>
Total Carbohydrate (g)	43	16%	Total Carbohydrate (g)
<i>*Changed from 300-275g:</i>			<i>*Changed from 300-275g:</i>
Dietary Fiber (g)	2	7%	Dietary Fiber (g)
<i>*Changed from 25-28g :</i>			<i>*Changed from 25-28g :</i>
Total Sugars (g):	1		Total Sugars (g):
Added Sugars	0	0%	Added Sugars
Protein (g):	6		Protein (g):
Vitamin D (mcg)	0	0%	Vitamin D (mcg)
<i>*Changed from 400IU (10µg) – 20µg:</i>			<i>*Changed from 400IU (10µg) – 20µg:</i>
Calcium (mg)	12.6	0%	Calcium (mg)
<i>*Changed from 1,000–1,300mg:</i>			<i>*Changed from 1,000–1,300mg:</i>
Potassium (mg)	60	2%	Potassium (mg)
<i>*Changed from 3,500-4,700mg:</i>			<i>*Changed from 3,500-4,700mg:</i>
Iron:	0.5	2%	Iron:

*Please note that changes in the Daily Values amounts and Nutrients declared. Serving Sizes has also changed for many commodities, please reference the attached document for appropriate serving size.

Packaging			
Individual Unit Dimension:	39x4x28 cm.	Case Gross Weight:	22.77 lbs
Case Dimensions (in):	13 x 9 x 9.5	Storage Practice:	Store unopened in a cool and dry place out of direct sunlight.
Case Cube (ft^):	0.6432	Storage Temperature:	40 – 80 °F
Block & Tier:	15 x 6	Shipping Temperature:	40 – 80 °F
Cases Per Pallet:	90		

Allergen List

The first column indicated the allergens that may be found in the product, either by addition or by cross contamination. The second column indicates the allergens that are present in other products that are run on the same equipment but at a different time, in the plant. The third column indicates whether any of those ingredients are present in the plant. Each square is answered with a YES or NO and, when applicable, the name of an ingredient.

Components	Present in Product	Present in Other Products Manufactured on the Same Line	Present in the Same Manufacturing Plant
Peanuts (including peanut oil)	No	no	no
Tree Nuts	No	no	no
Sesame Seeds	No	no	no
Milk & derivatives (Specify: milk, casein, whey, etc)	No	no	no
Eggs	No	no	no
Fish	No	no	no
Shellfish	No	no	no
Soy (excluding soy oil)	No	no	no
Wheat (Gluten)	Yes	Yes	yes
Sulphites	No	no	no
Corn	No	no	no
Poppy Seeds	No	no	no
Sunflower Seeds	No	no	no
MSG (monosodium glutamate)	No	no	no
Tartrazine	No	no	no

Case Label	
 614217 ALL NATURAL TOASTED PEARL COUSCOUS IMPORTED BY: ATALANTA CORP., ELIZABETH, NJ 07206  10071270383954 U 4 / 5 LBS	 614217 ALL NATURAL TOASTED PEARL COUSCOUS IMPORTED BY: ATALANTA CORP., ELIZABETH, NJ 07206 Country of Origin: ISRAEL S.I. No: Can Code:  10071270383954 U 4 / 5 LBS

Supplier No.	S356/S142
Manufacturer No.	F61OSS/F61ASF